

2022 / 2023 PRODUCT BROCHURE





To strive to make the most competitive and highest quality products available. Traditional craftsmanship defines each product from wood and coal cookstoves to custom metal fabrication. With a goal of high efficiency and low maintenance, DS products are built to last a lifetime. With four divisions, **Stove Manufacturing, Retail, Wholesale,** and **Custom Fabrication**, DS strives for excellence in everything they produce.







420 Series Cookstove

Heco #420

Our 420 Series is the smaller of our two elite cookstoves. This stove is designed to burn either wood or anthracite and includes the standard warming shelf. Customization options for this stove include solid or glass doors, three different stovetop choices, and optional add-ons such as a summer grate, warming closet, and 22 gallon water reservoir. As is standard for each of the Heco cookstoves, each stove includes air wash control, easy-access cleanout and a poker rod and ash tray.

FEATURES (#420 AND #520 MODELS):

- Burns Wood or Anthracite
- #420 heats up to 2000 sq. ft.
- #520 heats up to 2500 sq. ft.
- Standard bi-metal draft regulator
- Air wash control
- Easy access clean-out



520 Series Cookstove

Heco #520

Our 520 Series is the larger of our two elite cookstoves. The Heco 520 includes the same customization options as the Heco 420: solid or glass doors, three different stovetop choices, and optional add-ons such as a summer grate, warming closet, and 22 gallon water reservoir. The Heco 520 also includes the same standard items as our other stoves and is perfect for those with a larger home.

- Optional solid or glass doors
- Three stovetop material options
- Additional add-on options (i.e. summer grate, warming closet, and water reservoir)
- Made in the USA

Stovetop Options (both #420 & #520 models):

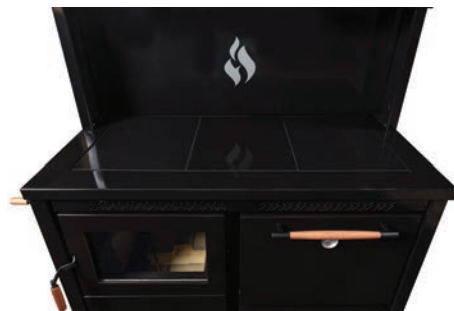
The Solid Polished Steel Top is welded to the stove body and has two clean-out lids. The 3 Panel Top allows for the entire stovetop top be removed for easier cleaning and repair.



3 Panel Polished Steel Top



Solid Polished Steel Top



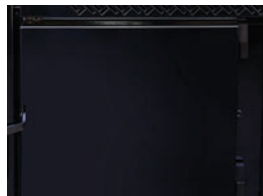
3 Panel Porcelain Top

Oven Door Options (both #420 & #520 models):

Each stove comes with your choice of glass or solid oven door. If needed or desired, doors can be removed and replaced.

**Firebox Door Options (both #420 & #520 models):**

Each stove comes with your choice of solid or glass firebox door. If needed or desired, doors can be removed and replaced.

**Summer Grate**

Our Summer Grate elevates the fire in the fire box, allowing the stove to be used for cooking with a small fire in warmer weather.

**Warming Closet**

The optional Warming Closet offers a closed door feature to the standard Warming Shelf, keeping food on the shelf warmer for longer.



2000 Series Cookstove

Heco 2000

Our 2000 Series is our base model, wood-burning-only cookstove. Each 2000 Series stove comes standard with a warming shelf and solid polished steel top. Customers can choose between glass or solid doors for both the firebox and oven doors. As is standard for each of the Heco cookstoves, each stove includes air wash control, easy-access cleanout and a poker rod and ash tray.

- Burns Wood
- #2000 heats up to 2500 sq. ft.
- Standard bi-metal draft regulator
- Air wash control
- Solid polished steel cooktop
- Easy access cleanout
- Optional glass door for firebox and oven
- Made in the USA



Temporarily Discontinued

SPECIFICATIONS (ALL 3 MODELS)

Model #	#2000	#420	#520
Fuel	Wood Only	Wood or Anthracite	Wood or Anthracite
Heating Area	up to 2,500 sq. ft.	up to 2,000 sq. ft.	up to 2,500 sq. ft.
BTU rating	85,000	72,000	90,000
Cooking Surface: (W x D)	46" x 20.25"	42.25" x 21"	46.5" x 21"
Stove Size with Handles (W x D)	50.5" x 33"	47.25" x 33.25"	51.5" x 33.25"
Height to Warming Shelf	50.25"	53.5"	53.5"
Oven Dimensions (D x W x H)	22" x 16.5" x 14"	21" x 18" x 13"	21" x 18" x 13"
Firebox Dimensions (D x W x H)	19" x 20" x 20"	19" x 12" x 17"	19" x 16" x 17"
Door Openings (W x H)	15.5" x 12.5"	12" x 9.5"	16" x 9.5"
Exhaust size	7"	6"	7"
Total Weight	700 lb.	775 lb.	840 lb.
Standard Bi-Metal Draft Regulator	Yes	Yes	Yes
U.L. tested*	No	Yes	Yes
Limited Lifetime Warranty	Yes	Yes	Yes

#2000: 61" x 48" Floor Protector Required; Non-UL Listed | #420: 58" x 48" Floor Protector Required; UL tested | #520: 62" x 48" Floor Protector Required; UL tested

All units require a class "A" all fuel chimney installation that must conform to local and state codes.

*Safety tested and labeled to U.L. Standards by Guardian Fire testing, to U.L. 1482 and ULC-5627



Anthra-Glo

Anthra-Glo DSAG65

Tired of high-cost heating with electricity or oil? Introducing the new innovative DSAG65 Anthra-Glo stove. This stove was designed to install in the first floor or basement of your home. It features the DS Thermo Smart-Fire Technology (TSFT) that uses thermocouples to control the burn rate on the fire grate. This stove has an optional thermostatic remote that will automatically adjust the burn rate of the stove as needed for your room.

- Burns Anthracite Rice
- Direct Vent
- DS Thermo Smart-Fire Technology (TSFT)
- 175 lb. stainless steel hopper
- Power consumption on high: .9 amps at 120V
- Large ashpan
- Large glass view with airwash
- Optional thermostatic remote control
- Automatic out fire shut off
- Made in the USA

SPECIFICATIONS

Model #	#DSAG65
Fuel	Anthracite Rice
Heating area (recommended)	500-2500 sq. ft.
BTU (Approx.)	65,000
Top door size (WxH)	21" x 17"
Ash door size (WxH)	21" x 13"
Ashpan height	9"
Rear exhaust / size	4"
Coal hopper capacity	175 lbs.
U.L. tested*	Yes
Weight	440 lbs.
Convection blower CFM	131
Overall size (WxDxH)	26" x 27" x 40.25"
Floor to center of rear exhaust	8.25"
Warranty	5 Year Limited Burner & Components - 1 Year Electrical - 1 Year

* Safety-tested to UL1482 for coal use only.

Anthra-Max

The DS Anthra-Max is an American-made, coal stove that puts efficiency and function ahead of price. Designed for the first floor or basement of a home, the DS Anthra-Max features an innovative smoke and gas re-burn system.

- Burns Anthracite
- Heat exchanger tubes through firebox for natural circulation
- Built from heavy plate steel
- Superior cast iron Shaker grates
- Cast iron airtight doors with knife edge seals
- Gravity fed coal hopper
- Dust free exterior Shaker handles
- Burn time 24-48 hours
- Removable firebrick retainers (bolt-on)
- SS secondary reburn baffle (removable)
- Adjustable air wash
- Bi-metal draft regulator (proven for 25+ years)
- Extra wide ashpan (for minimum ash spillage)
- Large 15" x 9" glass viewing window
- Made in the USA

Anthra-Max DSXV14



Anthra-Max DSXV15



Anthra-Max DSXV16



SPECIFICATIONS

Model #	#DSXV14	#DSXV15	#DSXV16
Fuel	Anthracite	Anthracite	Anthracite
Heating area (recommended)	500-1400 sq. ft.	1000-2000 sq. ft.	1500-2500 sq. ft.
Efficiency (Approx.)	82%	82%	82%
BTU (Approx.)	55,000	72,000	105,000
Firebox size (WxDxH)	16" x 12" x 14"	16" x 16" x 14"	16" x 20" x 14"
Firebox volume	1.55 cu. ft.	2.0 cu. ft.	2.60 cu. ft.
Hopper door size (WxD)	11.75" x 8.5"	11.75" x 8.5"	11.75" x 8.5"
Top door size (WxH)	18" x 11.75"	18" x 11.75"	18" x 11.75"
Ash door size (WxH)	19" x 5.25"	19" x 5.25"	19" x 5.25"
Rear exhaust/size	6"	6"	6"
Coal hopper capacity (Approx.)	40 lbs.	40 lbs.	40 lbs.
Coal volume with hopper (Approx.)	85 lbs.	110 lbs.	130 lbs.
U.L. tested	Yes*	Yes*	Yes*
Weight	490 lbs.	590 lbs.	650 lbs.
Warranty	5-year limited	5-year limited	5-year limited
Floor to center of rear exhaust	32.25"	32.25"	32.25"
Overall size with living room sheet metal (WxDxH)	28.5" x 22.5" x 39.5"	28.5" x 26.5" x 39.5"	28.5" x 31.5" x 39.5"
Overall size with basement sheet metal (WxDxH)	N/A	34.5" x 26.5" x 39.5"	34.5" x 31.5" x 39.5"
Optional basement or living room sheet metal	N/A - only sold with living room sheet metal	Yes	Yes
Optional top cover lid	Yes	Yes	Yes
Optional step top	No	Yes	Yes
Optional Blower (Vari-speed)	Max 125 CFM	Max 125 CFM	Max 125 CFM

* Safety-tested to UL1482 for coal use only.

DS Circulator

Models 1300WH, 1400WH, 1500WH, 1600WH

The DS Circulator will burn for up to two days. Known for its slow burning, the coal hopper is gravity-fed, using no electricity. The DS Regulator controls drafts. With four different sizes available, you can heat individual rooms or your whole house.

- 4 sizes available
- Heats up to 500 to 2500 sq. ft. depending on model
- Heat exchanger tubes through firebox for natural circulation
- Cast iron airtight doors
- Bi-metal draft regulator
- Gravity fed coal hopper - holds 50 lbs
- Burn time 24-48 hours
- Made in the USA

Temporarily Discontinued



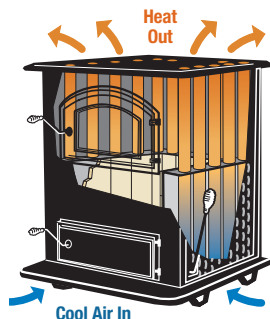
SPECIFICATIONS

Model #	#1300	#1400	#1500	#1600
Fuel	Anthracite	Anthracite	Anthracite	Anthracite
Heating area (recommended)	500-1200 sq. ft.	500-1600 sq. ft.	1000-2000 sq. ft.	1250-2500 sq. ft.
Efficiency	83%	83%	83%	83%
BTU approximately	50,000	80,000	96,000	125,000
Firebox size (WxD)	14" x 12"	14" x 16"	16" x 16"	16" x 20"
Firebox volume	2.0 cu. ft.	2.7 cu. ft.	3.2 cu. ft.	4.1 cu. ft.
Overall size (WxDxH)	26" x 20" x 36.75"	26" x 24.5" x 36.75"	28.5" x 26" x 36.75"	28.5" x 30.5" x 36.75"
Load door size (WxH)	16" x 10.5"	16" x 10.5"	16" x 10.5"	16" x 10.5"
Ash door size (WxH)	16.5" x 5.5"	16.5" x 5.5"	16.5" x 5.5"	16.5" x 5.5"
Top exhaust	N/A	N/A	N/A	N/A
Rear exhaust	6" - 30.25" center of flue	6" - 30.25" center of flue	6" - 30.25" center of flue	6" - 30.25" center of flue
Coal hopper capacity (Approx.)	50 lbs.	50 lbs.	50 lbs.	50 lbs.
Coal volume with hopper (Approx.)	75 lbs.	90 lbs.	110 lbs.	120 lbs.
U.L. tested	Yes*	Yes*	Yes*	Yes*
Weight	400 lbs.	475 lbs.	570 lbs.	648 lbs.
Warming shelf	Optional	Optional	Optional	Optional
Warranty	5-year limited	5-year limited	5-year limited	5-year limited

* Safety-tested to UL1482 for coal use only.

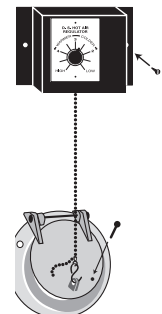
PATH OF HOT AIR THROUGH THE CIRCULATOR

Vertical tubes in the firebox increase the steel heating surface area by approximately 50%. This will create a natural hot air draft inside the tube and will draw cool air off the floor. The hot air produced by convection will constantly circulate through your house with no electrical blowers or fans, meaning even heat through your home.



THE DS REGULATOR

The DS Regulator is not electrical. It uses two different metals bonded together. The metals expand and contract based on temperature, directing the heat to where it is needed. Mounted directly on the hot surface of the stove, it governs the temperature by opening or closing the draft control. This draft control connects to a specially designed draft intake, through which air can enter to increase or decrease the temperature of the fire, depending on the heat radiated from the stove. The DS Regulator is equipped with a 5-position mechanical control dial.





Comfort Max **Model #75**

The Comfort Max is the perfect blend of style, efficiency and flexibility. It features a coal gas reburn system. Controlled by the DS Regulator, the secondary combustion system and heat exchanger make this unit 92% efficient.

- Heats up to 2000 sq. ft.
- Secondary smoke reburn system
- Bi-metal draft regulator
- Heat exchanger with tubes
- Cast iron airtight doors
- Optional blower
- Large glass viewing door
- Made in the USA

SPECIFICATIONS

Model #	#75
Fuel	Anthracite
Heating area (recommended)	1000-2000 sq. ft.
Efficiency	92%
BTU approximately	70,000
Firebox size (WxD)	19" x 12"
Firebox volume	2.3 cu. ft.
Firebox height	17.5"
Overall size (WxDxH)	26.25" x 24" x 39"
Load door size (WxH)	18" x 12"
Ash door size (WxH)	19" x 5.5"
Top exhaust	6" Standard
Rear exhaust	N/A
Blower	Optional 160 CFM
U.L. tested	Yes*
Weight	595 lbs.
Living room jacket	Standard
Warming shelf	N/A
Warranty	5-year limited

* Safety-tested to UL1482 for coal use only.



Anthra-Max Fireplace Insert **Models #DS-FP16**

The DS Anthra-Max is an American-made, coal stove that puts efficiency and function ahead of price. Designed for the first floor or basement of a home, the DS Anthra-Max features an innovative smoke and gas re-burn system.

- Burns Anthracite
- Easy liner attachment from inside of firebox
- Front loading baffle option
- Built from heavy plate steel
- Superior cast iron Shaker grates
- Cast iron airtight doors with knife edge seals
- Gravity fed coal hopper
- Dust free exterior Shaker handles
- Burn time 24-48 hours
- Removable firebrick retainers (bolt-on)
- SS secondary reburn baffle (removable)
- Adjustable air wash
- Bi-metal draft regulator (proven for 25+ years)
- Extra wide ashpan (for minimum ash spillage)
- Large 15" x 9" glass viewing window
- Made in the USA



SPECIFICATIONS

Fuel	Anthracite	Ash door size (WxH)	19" x 5.25"
Heating area (recommended)	1000-2000 sq. ft.	Ash pan size	2.75" high
Efficiency (Approx.)	82%	Top exhaust/size	6"
BTU (Approx.)	90,000	Coal hopper capacity (Approx.)	20 lbs.
Firebox size (WxDxH)	16" x 18" x 11"	Coal volume with hopper (Approx.)	80 lbs.
Firebox volume	1.8 cu. ft.	U.L. tested	Yes*
Firebox height to hopper	9.5"	Weight	480 lbs.
Firebox height	11"	Warranty	5-year limited
Hopper door size (WxD)	7.5" x 8.5"	Blower (Vari-speed)	Max CFM 220
Top door size (WxH)	18" x 11.75"	* Safety-tested to UL1482 for coal use only.	



Gas Furnace Model #DSGF74

The DSGF74 Hot Air Furnace was designed to heat your home or shop. The controls are simple and it does not require electricity to operate. The multi-level baffle system makes this unit as efficient as possible for a non-condensing gas unit. The 12" duct outlet on top of the furnace is designed to be connected with 12" pipe to a floor grille.

- Burns LP or NG
- Robertshaw Valve / Standing Pilot
- Non-electric
- Stainless steel burner tubes
- Multi-level baffle system
- Easy access panel to access controls
- Standard overfire auto-reset overfire switch
- Standard with 12" round top duct outlet
- Optional floor grille temperature limit switch
- Optional 12" duct booster fan
- Built-in draft hood
- Made in the USA

SPECIFICATIONS

Fuel	LP or NG	Gas valve hookup size	1/2" NPT
Heating area (recommended)	1000-3500 sq. ft.	Valve	Milli volt
Efficiency	82.8%	U.L. tested*	Yes
BTU approximately	75,000	Weight total	390 lbs.
Overall size (WxDxH)	24.5" x 38.6" x 49.7"	Warranty	Furnace - 5 year Valve - 1 Year Burner - 1 Year Controls - 1 Year
Floor to top of exhaust	33.5"		
Top exhaust	5"		

* Safety-tested to: Ansi Z21.86-2016, CSA 2.32-2016



Gravity Flow Coal Furnace

CoalMaster Model #2100 WH

The CoalMaster can heat your entire home using no electricity. The gravity-fed hopper provides up to two days of continuous heat. This basement model features a window for monitoring. Works great in greenhouses and shops, too.

- Heats up to 3000 sq. ft.
- Bi-metal draft regulator
- Removable coal hopper
- Made in the USA

SPECIFICATIONS

Fuel	Anthracite	Ash door size (W x H)	16.5" x 5.5"
Heating area (recommended)	1500-3000 sq. ft.	Rear exhaust	33.25" center of flue
Efficiency	80%	Coal hopper capacity (Approx.)	60 lbs.
BTU approximately	130,000	Coal volume with hopper (Approx.)	135 lbs.
Firebox size (W x D)	16" x 20"	Weight	540 lbs.
Firebox volume	4.0 cu. ft.	Sheet metal jacket	Standard
Overall size (W x D x H)	27.75" x 27" x 40"	Warranty	5-year limited
Load door size (W x H)	16" x 10.5"		

** Safety-tested to UL1482 for coal use only.*



Temporarily Discontinued



Econo Riteburn

Model #1624

The Econo Riteburn provides plenty of heat at a reasonable price. It is ideal for shops and greenhouses. Controlled by our special DS Regulator, the Econo Riteburn is easy to operate and requires low maintenance.

- Heats up to 2600 sq. ft.
- Bi-metal draft regulator
- Optional sheet metal jacket
- Left or right hand door opening available
- Made in the USA

SPECIFICATIONS

Fuel	Anthracite	Load door size (WxH)	11" x 12"
Heating area (recommended)	1500-2600 sq. ft.	Ash door size (WxH)	16.5" x 5.5"
Efficiency	71.5%	Top exhaust	7" Left or Right
BTU approximately	140,000	Weight	415 lbs.
Firebox size (WxD)	16" x 24"	Warming shelf	Optional
Firebox volume	4.9 cu. ft.	Warranty	5-year limited
Overall size (WxDxH)	29.5" x 30" x 36"		

** Safety-tested to UL1482 for coal use only.*



Temporarily Discontinued



HeatRight

Model #120

The HeatRight 120 can heat your whole house, shop, or just about any space. The HeatRight is a mid-range quality product, designed for durability, low-cost, simple operation.

- Heats up to 2600 sq. ft.
- Secondary combustion system
- Bi-metal draft regulator
- Made in the USA

SPECIFICATIONS

Fuel	Anthracite	Top exhaust	6"
Heating area (recommended)	2500 sq. ft.	Rear exhaust	N/A
Efficiency	80%	Blower CFM	N/A
BTU approximately	125,000	U.L. tested	Yes*
Firebox size (WxD)	16" x 22"	Weight	440 lbs.
Firebox volume	4.0 cu. ft.	Sheet metal jacket	Standard
Overall size (WxDxH)	25" x 29.75" x 36.5"	Warming shelf	N/A
Load door size (WxH)	11" x 12"	Warranty	5-year limited
Ash door size (WxH)	16.5" x 5.5"		

** Safety-tested to UL1482 for coal use only.*

EnergyMax Models #110 and 160



EnergyMax #110

Our best seller, the EnergyMax 110 is designed for high efficiency and a clean burn. It features a glass view door and burns coal. (This EnergyMax is controlled by the DS regulator and burns with 85% efficiency.) Available in red or black sheet metal.

- #110 heats up to 2400 sq. ft.
- #160 heats up to 3500 sq. ft.
- Reburn system that creates “EXTREME” clean burn for anthracite
- Bi-metal draft regulator
- Heat exchanger tubes through furnace that create a convectional circulation
- Secondary combustion system
- Sheet metal jacket that directs heat upwards
- Superior cast iron Shaker grates
- Cast iron airtight doors
- Ceramic glass in door with airwash system
- Made in the USA



EnergyMax #160

The EnergyMax 160 is a basement model designed to heat your entire home by convection. It was fashioned for the basement but will work well for use in a shop or a greenhouse. Using 2 ½” Firebrick for the firebox liner, this monster will serve for a long time. (This EnergyMax is controlled by the DS regulator and burns with 85% efficiency.)

SPECIFICATIONS

Model #	#110	#160
Fuel	Anthracite	Anthracite
Heating area (recommended)	1200-2400 sq. ft.	2000-3500 sq. ft.
Efficiency	85%	86%
BTU approximately	110,000	160,000
Firebox size (WxD)	14" x 22"	16" x 24"
Firebox volume	3.6 cu. ft.	4.5 cu. ft.
Overall size (WxDxH)	33.5" x 33.25" x 37.25"	36" x 36.5" x 41"
Load door size (WxH)	13.75" x 12"	13.75" x 12"
Ash door size (WxH)	16.5" x 5.5"	16.5" x 5.5"
Top exhaust	6"	8"
Rear exhaust	N/A	N/A
Blower	N/A	N/A
U.L. tested	Yes*	Yes*
Weight	750 lbs.	1050 lbs.
Sheet metal jacket	Standard	Standard
Warming Shelf	N/A	N/A
Warranty	5-year limited	5-year limited

* Safety-tested to UL1482 for coal use only.

Forced Air Coal Furnaces

Stoker Furnace **Model #DS SF250**

The Stoker Furnace is a twin to the Stoker Boiler that we manufacture. The difference is “hot air” vs. “hot water”. It is an auger-fed stoker with a pot burner, designed to burn rice coal. It is designed to feed the coal from an optional 500 lb. hopper or coal bin. This unit is constructed with a “built to last” attitude.

- Burns anthracite rice
- Auger-fed round fire pot with complete breakdown “floating” design
- Special tubes through the firebox for maximum heat exchange
- RH or LH feed option
- Outfire sensor
- Variable speed combustion blower and auger
- Smart relay technology
- Domestic coil option
- 3-speed blower
- Filter box - right or left intake
- Optional 500 lb. hopper
- Made in the USA

SPECIFICATIONS

Fuel	Anthracite Rice
Heating area (recommended)	1000-5000 sq. ft.
Greenhouse heating area	500-2500 sq. ft.
Efficiency	84.7%
BTU approximately	50,000-250,000
Overall size (WxDxH)	30.75" x 36" x 51"
Top door size (WxH)	15.25" x 13.25"
Ash door size (WxH)	24" x 15.5"
Exhaust	8"
Pot size	10"
Plenum inlet and outlet	18" x 18"
Blower CFM	3-Speed 1100, 1350, 1600
U.L. tested	Yes*
Weight	850 lbs.
Warranty	5-year limited 1-year on electrical

*All units require a class “A” all fuel chimney installation that must conform to local and state codes. *Tested to U.L. #391, and CAN/CSA #B366.*

Ecomiser **Model #200-10**

The Ecomiser was designed to be economical. This U.L. listed coal burning furnace is controlled with a bi-metal regulator, combining with secondary combustion for maximum efficiency, using less fuel.

- Heats up to 2500 sq. ft.
- Preset secondary combustion
- Bi-metal draft regulator
- Cast iron airtight doors
- Secondary combustion system
- Adjustable snap disc for distribution blower
- Standard with filter box
- Made in the USA

SPECIFICATIONS

Fuel	Anthracite	Top exhaust	N/A
Heating area (recommended)	1000-2500 sq. ft.	Rear exhaust	8"
Efficiency	76.4%	Floor to outlet	44" center
BTU approximately	120,000	Plenum inlet and outlet	18" x 18"
Firebox size (WxD)	16" x 24"	Blower CFM	965
Firebox volume	5.5 cu. ft.	U.L. tested	Yes*
Overall size (WxDxH)	24" x 29.5" x 49.75"	Weight	500 lbs.
Depth including filter box	50.5"	Sheet metal jacket	Standard
Load door size (WxH)	14" x 14.5"	Warranty	5-year limited 1-year electrical
Ash door size (WxH)	16.5" x 5.5"		



** Safety-tested to UL1482 for coal use only.*

Forced Air Coal Furnaces

Kozy-King Models #DS100-14, DS300-09, DS400-09

The Kozy-King is thermostat controlled for even temperature. The furnace comes with a 3-speed blower and a safety feature to prevent overheating. The Kozy-King will heat your whole house, shop or greenhouse.

- #100-14 heats up to 2000 sq. ft.
- #300-09 heats up to 3000 sq. ft.
- #400-09 heats up to 4000 sq. ft.
- Cast iron airtight doors
- 3-speed blower
- Thermostat controlled
- Safety control with fan limit switch
- Secondary combustion system
- Special tubes through fire box for maximum heat circulation
- Forced draft
- Insulated cabinet
- 80/20 combustion bypass
- 85.1% efficiency rating
- Domestic water option
- Made in the USA

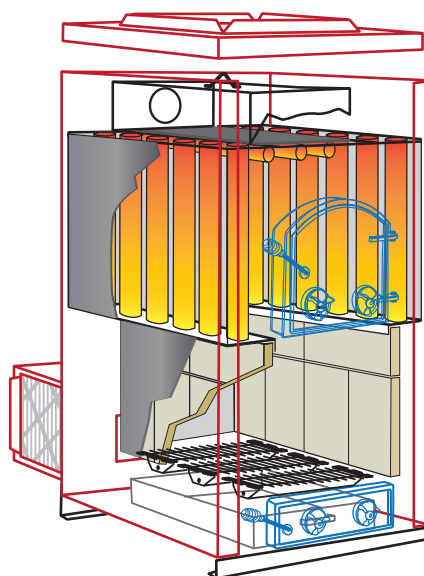
SPECIFICATIONS

Model #	#100-14	#300-09	#400-09
Fuel	Anthracite	Anthracite	Anthracite
Heating area (recommended)	1200-2000 sq. ft.	2000-3000 sq. ft.	2500-4000 sq. ft.
Efficiency	85.1%	85.1%	85.1%
BTU approximately	90,000	140,000	205,000
Firebox size (WxD)	14" x 20"	16" x 22"	16" x 29"
Firebox volume	3.5 cu. ft.	6.2 cu. ft.	8 cu. ft.
Overall size (WxDxH)	27.5" x 27" x 47.75"	28.5" x 29" x 53"	28.5" x 36" x 53"
Depth including filter box	47"	49"	56"
Load door size (WxH)	12" x 11"	14" x 14.5"	14" x 14.5"
Ash door size (WxH)	16.5" x 5.5"	16.5" x 5.5"	16.5" x 5.5"
Top exhaust	N/A	N/A	N/A
Rear exhaust	6"	8"	8"
Floor to outlet	42.5" center of flue	47" center of flue	47" center of flue
Plenum inlet and outlet	18" x 18"	18" x 18"	18" x 18"
Blower CFM	3-Speed 1100, 1350, 1650	3-Speed 1100, 1350, 1650	3-Speed 1100, 1350, 1650
U.L. tested	Yes*	Yes*	Yes*
Weight	700 lbs.	730 lbs.	820 lbs.
Insulated jacket	Standard	Standard	Standard
Warranty	5-year limited 1-year electrical	5-year limited 1-year electrical	5-year limited 1-year electrical

** Safety-tested to UL1482 for coal use only.*

THE DS HOT AIR CIRCULATOR SYSTEM

Vertical tubes in the firebox increase the steel heating surface area by approximately 50%. This will create a natural hot air draft inside the tube and will draw cool air off the floor. The hot air produced by convection will constantly circulate through your house with no electrical blowers or fans, meaning even heat through your home.





Gravity Flow Wood & Coal Greenhouse Furnace



GH Blast Model #450

Our greenhouse furnace requires no electricity to heat the entire area. Each unit has a powerful heat exchanger combined with the DS Circulator system for excellent gravity circulation!

- Specializing in shop or greenhouse applications
- Natural or forced draft options
- Heat exchanger to maximize efficiency
- All constructed from heavy plate steel
- Five-year limited warranty
- Made in the USA

SPECIFICATIONS

Fuel	Wood & Anthracite	Overall size with outside fire door	40.5" x 81" x 78"
Heating area (recommended)	up to 10,000 sq. ft.	Outside door framing opening (WxH)	40.75" x 75.5"
Heating area for a greenhouse (recommended)	up to 4500 sq. ft.	Load door size (WxH)	18" x 18"
Efficiency	Approx. 80%	Ash door size (WxH)	16.5" x 8.5"
BTU approximately	450,000	Top exhaust	10" Standard
Firebox size (W x D)	24" x 52"	Rear exhaust	N/A
Firebox volume	20 cu. ft.	U.L. tested	No
Log size	48"	Weight	2425 lbs.
Overall size (WxDxH)	40.5" x 62.5" x 78"	Insulated outside fire door	Optional
		Warranty	5-year limited





Gas Boiler

Gas Boiler **Model #DSGB-150**

- Easy access panel to access controls
- Robertshaw valve 1/2 to 3/4
- 304 Stainless steel baffles
- Over 5,000 SQ inches of heat exchange surface for optimal efficiency
- Completely insulated boiler
- Stainless steel burner tubes

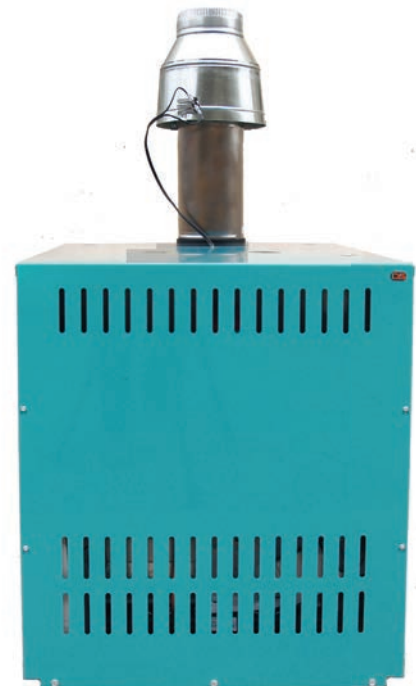
SPECIFICATIONS

Fuel	LP or NG
Heating area	1500-5000 sq. ft.
Efficiency	83.8%
BTU Approx.	150,000
Gas valve hookup size	1/2" NPT
Overall size (WxDxH)	27" x 33" x 32.5"
Water inlet/outlet	2"
Top exhaust	6"
Rear exhaust	N/A
Water capacity	30 gallons
Weight	650 lbs.
U.L. tested*	Yes
Warranty	5-year limited 1-year controls

* Safety-tested to: Ansi Z21.13-2017, CSA 4.9-2017, CSA B51 Standards

GAS BOILER PRICING INCLUDES:

- NG or LP Burner
- 30# Safety Valve
- Boiler Drain
- Aquastat
- Temperature Pressure Gauge
- Gas Valve and Controls
- Safety Shutoff Sensors



Coal Boilers

Aqua-Stoke Models #SB200

DS is a family owned business that was established in 1978. DS has over 30 years of experience with designing and manufacturing solid fuel stoves and boilers. In 2015 DS started the research and development of the Aqua-Stoke. It is an auger fed stoker with a pot burner, designed to burn anthracite rice. It is designed to feed the anthracite from an optional 500 lb. hopper or bin. This unit is constructed with a “built to last” attitude.

- Burns Anthracite Rice
- Built from heavy plate steel
- Cast iron airtight fire door with knife edge seal and glass view
- Optional 500 lb. hopper
- Auger fed round fire pot with complete breakdown “floating” design
- R/h or l/h feed option
- Outfire auger and blower shutoff with light indicator
- Large 10” high ashpan for longer burn time and optimal spillage control
- 8” rear exhaust
- Variable speed blower and auger
- Optional 4 or 5 gallon-per-min domestic hot water coil
- Heavy duty heat exchanger
- High-efficiency motors for a total power consumption of 1.7 amps (*Approximate average consumption .66 amps*)
- Optional insulated jacket
- Multiple easy access panels for maintenance and cleaning
- Made in the USA



STOKER BOILER PRICING INCLUDES:

- Carbon Monoxide Detector
- Boiler
- Base
- Pot
- First Pot Auger
- Electrical Controls
- 30# Safety Valve
- Temperature Pressure Gauge
- Boiler Drain

SPECIFICATIONS

Model Number	#SB200
Fuel	Anthracite Rice
Heating area	1000-5000 sq. ft.
Greenhouse heating area	500-2500 sq. ft.
Efficiency	82.8%
BTU (Approx.)	50,000-230,000
Firebox size (WxDxH)	20" x 18" x 18.25"
Burn pot size	10"
Overall size (WxDxH)	27" x 40" x 53"
Total width with blower and control box	43"
Total width with 500 lb. hopper connected	77.5"
Total size of hopper (WxDxH)	26" x 26" x 48"
Top door size (WxH)	15.25" x 13.25"
Ash door size (WxH)	24" x 15.5"
Bottom rear exhaust	8"
Water capacity	50 gallons
Inlet/outlet	2"
U.L. tested*	Yes
Weight total	1175 lbs. (Base-176 lbs., Boiler-775 lbs., Components-224 lbs.)
Insulated jacket	Optional
Warranty	5-year limited 1-year on electrical, bushings and wearplates

All units require a class “A” all fuel chimney installation that must conform to local and state codes. *Tested to U.L. #1482, U.L. #5627, U.L. #391, and CSA #8366.





DS 3200 with sheet metal insulation kit



Aqua-Gem Models #1100, 3200, 4200

The Aqua-Gem's hydronic system requires no electricity to heat water for floor heating, baseboard, freestanding radiators, heat pumps, or domestic water. It works well with new or existing oil or electric boilers. Each unit is pressure tested to 120 PSI and has a powerful heat exchanger for maximum efficiency.

- Safety tested to U.L. standards
- Secondary combustion system
- Optional 4 or 5-gallon per minute domestic water coil
- Optional forced draft
- Optional insulation/sheet metal cabinet
- Made in the USA

SPECIFICATIONS

Model #	#1100	#3200	#4200
Fuel	Anthracite	Anthracite	Anthracite
Heating area (recommended)	1000-2400 sq. ft.	2000-3500 sq. ft.	3000-5000 sq. ft.
Efficiency	78%	78%	78%
BTU approximately	100,000	160,000	230,000
Firebox size (WxDxH)	16.5" x 19" x 20"	19" x 24" x 25"	19" x 30" x 25"
Firebox volume	3.6 cu. ft.	7.0 cu. ft.	8.2 cu. ft.
Overall size (WxDxH)	23.5" x 25" x 49.5"	26" x 30" x 53.5"	26" x 36" x 53.5"
Load door size (WxH)	11" x 12"	14" x 14.5"	14" x 14.5"
Ash door size (WxH)	16.5" x 9"	16.5" x 9"	16.5" x 9"
Top exhaust	6" Standard	7" Standard	8" Standard
Rear exhaust	Optional 6"-39" center of flue	Optional 7"-42.5" center of flue	Optional 8"-42.5" center of flue
4- or 5-GPM Domestic water coil	Yes	Yes	Yes
Water capacity	27 Gallons	40 Gallons	45 Gallons
Inlet/outlet	4 - 1.25"	4 - 2"	4 - 2"
U.L. tested	Yes*	Yes*	Yes*
Weight	800 lbs.	1050 lbs.	1250 lbs.
Insulated jacket	Optional	Optional	Optional
Warranty	5-year limited 1-year controls	5-year limited 1-year controls	5-year limited 1-year controls

All units require a class "A" all fuel chimney installation that must conform to local and state codes.

*Tested to U.L. #391, U.L. #2563, and CSA #B366.1



This 4 or 5-gallon-per-minute domestic water coil can heat your hot water or work in conjunction with your existing domestic water system. You can save up to \$100.00 per month over LP gas, electric or heating fuel.

Coal Boiler **Model #9158**

- Tank built from 1/4" plate steel
- Top load
- Rugged multi-purpose boiler
- Controlled with Samson regulator

Temporarily Discontinued

SPECIFICATIONS

Fuel	Anthracite	Ash door size (W x H)	16.5" x 5.5"
Heating area (recommended)	1000-2400 sq. ft.	Top exhaust	6"
Efficiency	Approximately 78%	Rear exhaust	N/A
BTU approximately	105,000	Water capacity	32 gallons
Firebox size (W x D)	18" diameter x 24"H	U.L. tested	No
Firebox volume	5.0 cu. ft.	Weight	445 lbs.
Overall size (W x D x H)	29.75" x 32" x 41.5"	Warranty	5-year limited
Load door size (W x H)	9.5" x 6.5"		



Coal & Wood Boilers

Power Boilers **Models #5000, 6000, 7000**

Our hydronic units require no electricity to heat water for floor heating, baseboard, freestanding radiators, heat pumps, or domestic water systems. Constructed from 1/4" steel, these boilers easily maintain water temperature. Each unit is pressure tested to 120 PSI and has a powerful heat exchanger for maximum efficiency.

SPECIFICATIONS

Model #	#5000	#6000	#7000
Fuel	Wood* & Anthracite	Wood* & Anthracite	Wood* & Anthracite
Heating area (recommended)	up to 7500 sq. ft.	up to 10,000 sq. ft.	up to 12,000 sq. ft.
Heating area for a greenhouse (recommended)	up to 3800 sq. ft.	up to 4500 sq. ft.	up to 6000 sq. ft.
Efficiency	Approx. 80%	Approx. 80%	Approx. 80%
BTU approximately	380,000	450,000	520,000
Firebox size (W x D)	24" x 39"	24" x 45.5"	24" x 52"
Firebox volume	13 cu. ft.	15.2 cu. ft.	17.3 cu. ft.
Log size	36"	42"	48"
Overall size (W x D x H)	33.5" x 46" x 62"	33.5" x 53" x 62"	33.5" x 59" x 72"
Load door size (W x H)	16" x 18"	16" x 18"	18" x 18"
Ash door size (W x H)	16.5" x 8.5"	16.5" x 8.5"	16.5" x 8.5"
Top exhaust	8" Standard	8" Standard	10" Standard
Rear exhaust	Optional 8" - 50.75" center of flue	Optional 8" - 50.75" center of flue	Optional 10" - 56.75" center of flue
Domestic water	Optional 4 or 5 GPM coil	Optional 4 or 5 GPM coil	Optional 4 or 5 GPM coil
Water capacity	125 Gallons	136 Gallons	175 Gallons
U.L. tested	No	No	No
Weight	1950 lbs.	2100 lbs.	2500 lbs.
Insulated sheet metal jacket	Optional	Optional	Optional
Warranty	5-year limited	5-year limited	5-year limited

* wood burning for non residential use only.



- Specializing in greenhouse applications
- Natural or forced draft options
- Heat exchanger to maximize efficiency
- All constructed from 1/4" plate steel
- Optional 4 or 5-gallon-per-minute domestic water coil
- Five-year limited warranty
- Made in the USA

Coal Water Heater

#151 Bucket-a-day

- Designed to heat domestic water or smaller homes
- Requires only 30 lbs. of coal per day
- Tank built from 304 stainless steel
- Detachable top and bottom
- Draft regulated with a Samson control
- Requires a minimum 40 gallon storage tank when heating domestic water

SPECIFICATIONS

Fuel	Anthracite	Ash door size (WxH)	16.5" x 5.5"
Heating area (recommended)	Domestic water or 250-1200 sq. ft.	Top exhaust	Oval 6"
Efficiency	Approximately 78%	Rear exhaust	N/A
BTU approximately	55,000	Water capacity	8 gallons
Firebox size (WxD)	13" diameter x 16"H	U.L. tested	N/A
Firebox volume	2.0 cu. ft.	Weight	240 lbs.
Overall size (WxDxH)	24" x 24" x 30"	Warranty	1-year limited
Load door size (WxH)	9" x 6"		



Wood Water Heater

#24 W Wood Water Heater

- Tank built from 304 stainless steel
- Designed to heat domestic water
- Draft regulated manually or with Samson control
- Requires a minimum 40 gallon storage tank
- Requires 75# safety valve (included)

SPECIFICATIONS

Fuel	Wood	Load door size (WxH)	8.5" x 8.5"
Heating area (recommended)	Domestic water	Ash door size (WxH)	N/A
Efficiency	N/A	Top exhaust	N/A
BTU approximately	50,000	Rear exhaust	6" center of flue
Firebox size (WxD)	14" diameter x 24"D	Water capacity	10 gallons
Firebox volume	2.0 cu. ft.	U.L. tested	N/A
Log size	22"	Weight	140 lbs.
Overall size (WxDxH)	19" x 24" x 36"	Warranty	1-year limited



Coal Fired Hot Water Heater

(for veal calf barns)

#1530 Coal Veal Boiler

- Designed to heat water for veal calves
- Feeds up to 300 calves
- Tank built from 304 stainless steel
- Designed to work with a 500+ gallon tank
- 2-3" clean out ports at bottom of tank
- This unit can also be used for other types of heating

SPECIFICATIONS

Fuel	Anthracite	Load door size (W x H)	9.5" x 6.5"
Heating area (recommended)	500-1800 sq. ft. or 500 gallons of water	Ash door size (W x H)	16.5" x 5.5"
Efficiency	Approximately 78%	Top exhaust	6" oval
BTU approximately	73,000	Rear exhaust	N/A
Firebox size (W x D)	15" diameter x 24"H	Water capacity	32 gallons
Firebox volume	4.0 cu. ft.	U.L. tested	N/A
Log size	N/A	Weight	360 lbs.
Overall size (W x D x H)	24" x 24" x 35"	Warranty	1-year limited



Wood Fired Hot Water Heater

(for veal calf barns)

#200 WVB Boiler

- Designed to heat water for veal calves
- Feeds up to 100 calves
- Tank built from 304 stainless steel with lid
- Float valve on top optional (1" NPT)
- Drain is 43" from floor optional side 1.5" NPT.
- Exhaust and fittings can be placed on either side
- Firebrick lined firebox

SPECIFICATIONS

Model #	#200 WVB	#300 WVB
Fuel	Wood	Wood
Heating area (recommended)	Veal boiler	Veal boiler
Efficiency	N/A	N/A
BTU approximately	300,000	400,000
Firebox size (W x D)	30" x 46"	40" x 52"
Firebox volume	16.0 cu. ft.	24.0 cu. ft.
Log size	42"	48"
Overall size (W x D x H)	30" x 46" x 74"	40" x 52" x 84"
Load door size (W x H)	14" x 14.5"	14" x 14.5"
Ash door size (W x H)	N/A	N/A
Top exhaust	8"	8"
Rear exhaust	Available	Available
Water capacity	200 gallons	300 gallons
U.L. tested	N/A	N/A
Weight	1200 lbs.	1350 lbs.
Warranty	1-year limited	1-year limited

#300 WVB Boiler

- Designed to heat water for veal calves
- Feeds up to 250 calves
- Tank built from 304 stainless steel with lid
- Float valve on top optional (1" NPT)
- Drain is 43" from floor optional side 1.5" NPT.
- Exhaust and fittings can be placed on either side
- Firebrick lined firebox





Wood or Gas Fired Canners



#2437 Square Canner **Temporarily Discontinued**

- 24"W x 24"D x 34"H
- Stainless steel construction with wooden jar rack
- Holds approximately 36 quart jars per layer
- Capacity 37 gallons
- Portable - for outdoor use only
- 6" standard flue with stove pipe holder
- Lockable ball valve
- Designed to burn wood or LP gas burner can be installed



#2738 Deluxe Canner

- 27" square x 34" high
- Capacity 37 gallons
- Double wall construction heats water 50% faster than the #2530, #2540, #2437
- 6" flue
- Has two hinged lids
- Firebrick lined firebox
- Wooden jar rack included



#70LPG Burner

- 10" cast iron low pressure LP burner
- Adjustable, max 70,000 BTUs
- Pilot with safety shut-off
- Designed to fit #2530, 2540, 2738 canners



#2530 Round Canner

- 25" diameter x 34" high
- Stainless steel construction with wooden jar rack
- Holds approximately 30 quart jars
- Capacity 30 gallons
- Portable - for outdoor use only
- 6" standard flue with stovepipe holder
- Lockable drain
- Designed to burn wood or LP gas burner can be installed

#2540 Round Canner

- 25" diameter x 36" high
- Stainless steel construction with wooden jar rack
- Holds approximately 30 quart jars per layer
- Capacity 40 gallons
- Portable - for outdoor use only
- 6" standard flue with stovepipe holder
- Lockable drain
- Designed to burn wood or LP gas burner can be installed

Temporarily Discontinued

Stove Top Canners



#24 Stove Top Canner

(Shown above with #PR060X 2-Burner Stove*)

#24 Stove Top Canner

(Shown on left with #PR060X 2-Burner Stove and on right #EX60LW 2-Burner Stove)

- 29.5"W x 13.75"D x 10.5"H
- Capacity 18.4 gallons
- All stainless steel
- Holds 24 quart jars
- Designed to fit on a gas burner system
- Has 1/2" NPT at bottom for drain



#24 Stove Top Canner

(Shown above with #EX60LW 2-Burner Stove*)



#15 Stove Top Canner


(Shown left with #BS40C Ranger II Table Top Stove and right on a gas cook stove)

- 20.5"W x 11.5"D x 13"H
- Two burner canner
- Capacity 13 gallons
- All stainless steel
- Holds 15 quart jars
- Designed to fit a gas cook stove or tabletop stove



* Two burner stoves are sold separately and are not manufactured by DS

Which DS Product is Right for You?

	First Floor	Basement	Whole House	Forced Hot Air	Coal	Wood	Gas	Freestanding Unit	Hot Water Heating	Green House/Shop
Anthra-Max	•	•	•		•			•		
Anthra-Max Fireplace Insert	•	•	•		•					
Anthra-Glo	•	•	•		•			•		
Aqua-Gem Boilers #1100 , 3200, 4200		•	•		•				•	•
Aqua-Stoke		•	•		•				•	•
CoalMaster		•	•		•			•		•
Comfort Max	•	•	•		•			•		
DS Circulator	•	•	•		•			•		
Ecomiser		•	•	•	•					•
Econo Riteburn		•	•		•			•		•
EnergyMax #110	•	•	•		•			•		
EnergyMax #160		•	•		•			•		•
Gas Boiler		•	•				•		•	•
Gas Furnace		•	•				•			•
GH Blast #450					•	•		•		•
HeatRight		•	•		•			•		
Heco Cookstove	•		•		•	•		•		
Kozy-King		•	•	•	•					•
Power Boilers # 5000, 6000, 7000					•	•			•	•
Stoker Furnace		•	•	•	•				•	•

*See individual product brochures for U.L. testing information.



238 Old Leacock Road
Gordonville, PA 17529
717-768-3853
DSofPA.com

Authorized Dealer