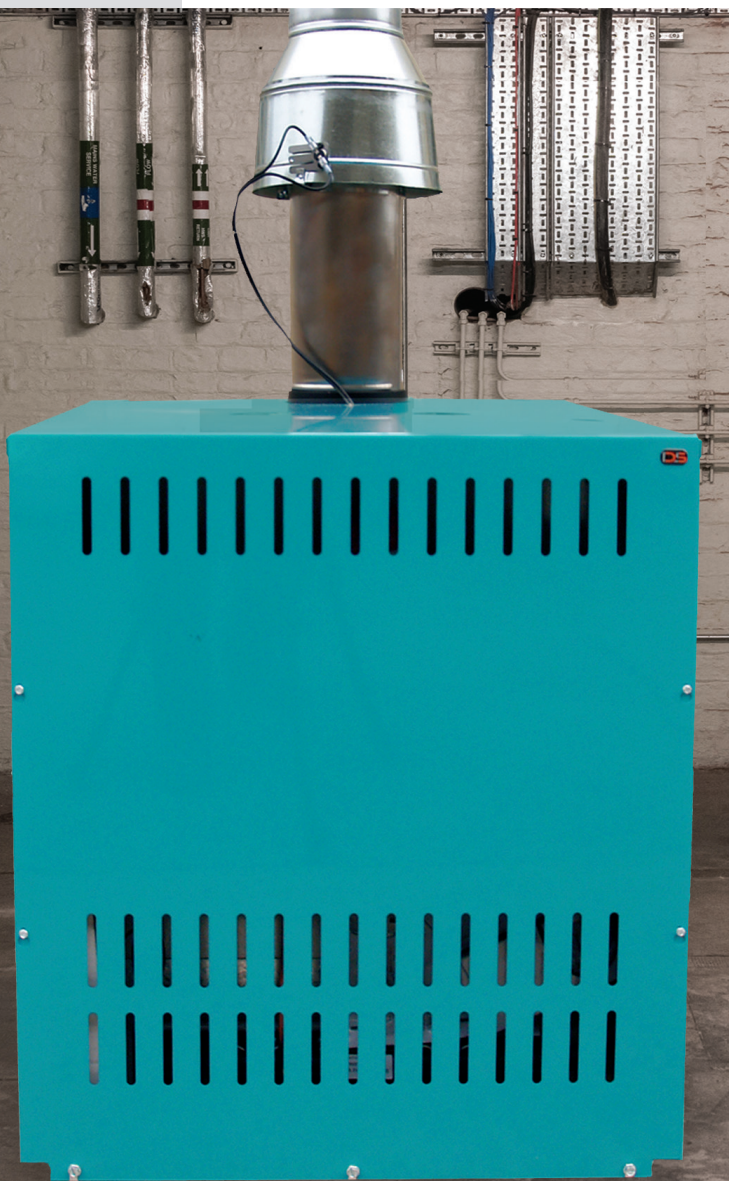




Gas Boiler

Model #DSGB-150



Designed for Gravity-flo or
Pump hot water heat systems



Where Tradition, Craftsmanship and Quality Come First



Since 1980, DS, a family owned business in Lancaster Pennsylvania has made sincere efforts to have the most competitive and the highest quality product available and it shows in the product they manufacture.

Traditional craftsmanship defines each product from wood and coal furnaces to custom metal fabrication. With a goal of high efficiency and low maintenance, along with superior quality, DS products are built to last a lifetime.

With four divisions, Stove Manufacturing, Retail, Wholesale, and Custom/Production Fabrication, DS strives for excellence in everything they produce.

Which DS product is right for you?

	First Floor	Basement	Whole House	Forced Hot Air	Coal	Wood	Gas	Freestanding Unit	Hot Water Heating	Green House/Shop
Anthra-Max	•	•	•		•			•		
Anthra-Max Fireplace Insert	•	•	•		•					
Anthra-Glo	•	•	•		•			•		
Aqua-Gem Boilers #1100 , 3200, 4200		•	•		•				•	•
Aqua-Stoke		•	•		•				•	•
CoalMaster		•	•		•			•		•
Comfort Max	•	•	•		•			•		
DS Circulator	•	•	•		•			•		
Ecomiser		•	•	•	•					•
Econo Riteburn		•	•		•			•		•
EnergyMax #110	•	•	•		•			•		
EnergyMax #160		•	•		•			•		•
Gas Boiler		•	•				•		•	•
Gas Furnace		•	•				•			•
GH Blast #450					•	•		•		•
HeatRight		•	•		•			•		
Heco Cookstove	•		•		•	•		•		
Kozy-King		•	•	•	•					•
Power Boilers # 5000, 6000, 7000					•	•			•	•
Stoker Furnace		•	•	•	•				•	•

Things to Consider When Purchasing

#DSGB-150 Gas Boiler

GB150-LPB LP Burner Assembly

GB150-NGB NG Burner Assembly

6-350 Draft Hood

B-Vent Chimney

Boiler Controls:

Expansion Tank

Circulator Pump

Zone Valves

Mixing Valve

Air Vents

Feed Water Regulator

CO and Smoke Alarm

SubTotal _____

Tax _____

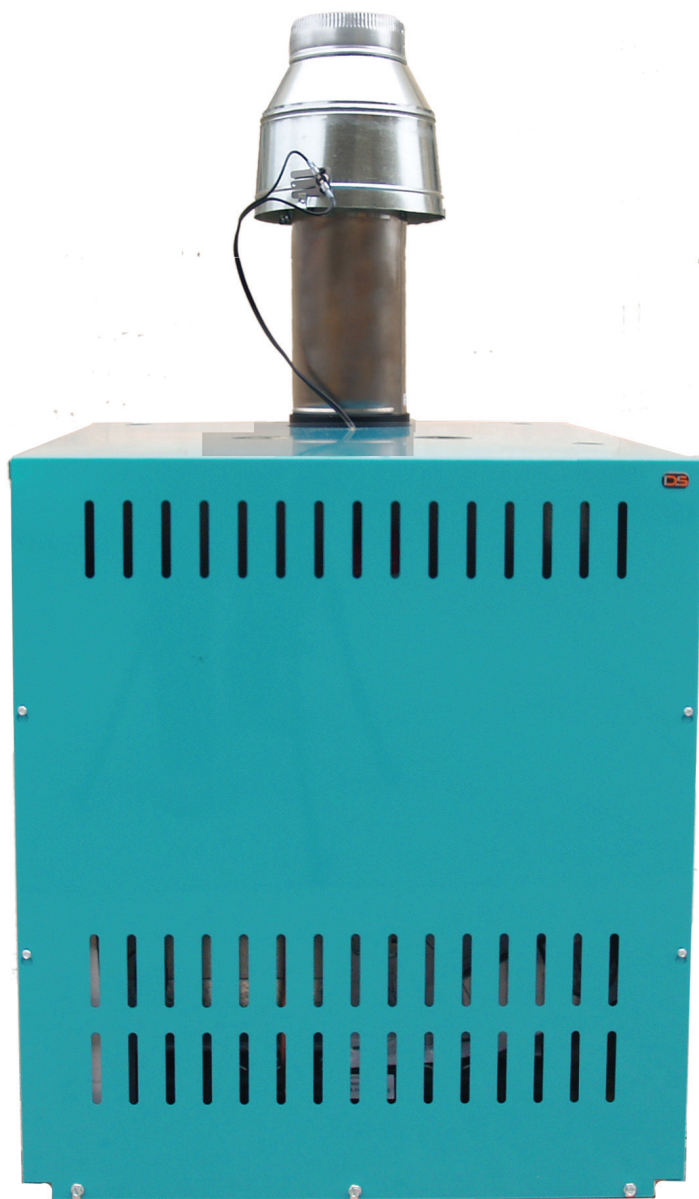
TOTAL _____

Prices are subject to change without notification

DS621-0

Authorized Dealer

LP or NG Hot Water Boiler

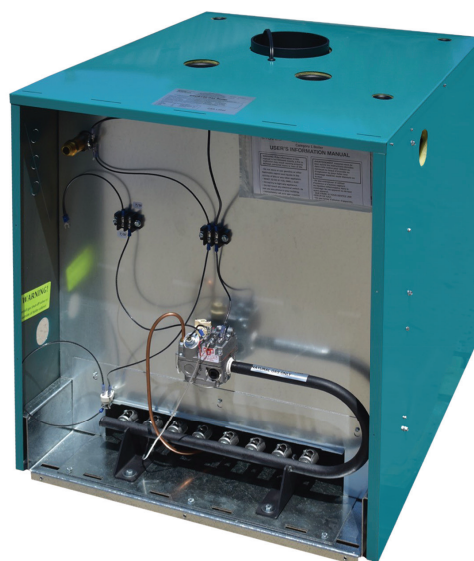


After a lot of requests from DS dealers, early 2017 DS started research and development of the Gas Boiler. After multiple test batches, the boiler was finally safety and efficiency tested in May of 2019. This boiler was designed for “gravity-flo or pump” hot water systems and was designed to be “installer” friendly. The heat exchange tubes and stainless steel baffle make this unit as efficient as possible for a non-condensing gas unit.

FEATURES:

- Burns LP or NG
- Robertshaw Valve / Standing Pilot
- Stainless burner tubes
- 304 Stainless steel baffle with heat exchanger tubes
- 5,000+ sq. inches of heat exchange
- Non-electric
- Easy access panel to access controls
- Insulated sheet metal jacket
- Made in the USA

Interior view
of Gas Boiler



SPECIFICATIONS

Model Number	DSGB150
Fuel	LP or NG
Heating area	1500-5000 sq. ft.
Efficiency	83.8%
BTU (Approx.)	150,000
Overall size (WxDxH)	27" x 33" x 31.25"
Top exhaust	6"
Water capacity	30 gallons
Water inlet/outlet size	2"
Gas valve hookup size	1/2" NPT
Valve	Milli volt
U.L. tested*	Yes
Weight total	750 lbs.
Insulated jacket	Standard
Warranty	Boiler - 5 Years Valves - 1 Year Burner - 1 Year Controls - 1 Year

CLEARANCE FROM COMBUSTIBLES

Back	16"
Front	18"
Right Side	4"
Left Side	6"
Ceiling	24"
Single Wall Stovepipe	6"
Draft Hood	6"
Hot Water Pipes	.5"

All units require a class “B” chimney installation that must conform to local and state codes.

*Safety tested to: Ansi Z21.13-2017, CSA 4.9-2017, CSA B51 Standards.