



Striving to make the most competitive and highest quality products available. Traditional craftsmanship defines each product from wood and anthracite cookstoves to custom metal fabrication. Engineered for enduring performance and minimal maintenance, DS products are designed to last a lifetime. With four divisions, Stove Manufacturing, Retail, Wholesale, and Custom Fabrication, DS strives for excellence in everything they produce.

**Which DS product is right for you?**

	First Floor	Basement	Whole Home	Forced Hot Air	Anthracite	Wood	Gas	Freestanding Unit	Hot Water Heating	Greenhouse / Shop
Anthra-Max	•	•	•		•			•		
Anthra-Max Fireplace Insert	•	•	•		•					
Anthra-Glo	•	•	•		•			•		
Aqua-Gem Boilers #1100, 3200, 4200		•	•		•			•	•	•
Aqua-Stoke		•	•		•			•	•	•
Comfort Max	•	•	•		•			•		
Dawn Series 40S	•		•				•			
Ecomiser		•	•	•	•			•		•
EnergyMax #ND110	•	•	•		•			•		
EnergyMax #ND160		•	•		•			•		•
Gas Boiler		•	•				•	•	•	•
Gas Furnace		•	•				•	•		•
GH Blast				•	•			•		•
HeatRight		•	•		•			•		
HECO 320W	•		•		•			•		
HECO 420 & 520	•		•		•	•		•		
Kozy-King		•	•	•	•			•		•
Power Boilers #5000, 6000, 7000					•	•		•	•	•
Stoker Furnace		•	•	•	•			•	•	•

**Things To Consider When Purchasing**

- Gas Boiler #GB-150.....
- LP Burner Assembly.....
- NG Burner Assembly.....
- Draft Hood.....
- B-Vent Chimney.....

**Boiler Controls:**

- Expansion Tank.....
- Circulator Pump.....
- Zone Valves.....
- Mixing Valve.....
- Air Vents.....
- Feed Water Regulator.....
- CO & Smoke Alarm.....

Subtotal \_\_\_\_\_

Tax \_\_\_\_\_

**Total** \_\_\_\_\_

DS2025

*Prices are subject to change without notification*

Authorized Dealer



# Gas Boiler

**Model #GB-150**



Where Tradition, Craftsmanship, and Quality Come First

Whole Home Heating Solutions Since 1980

# Cold Spaces To Warm Embraces

In response to numerous requests from DS dealers, DS embarked on a comprehensive research and development endeavor in early 2017 to create the GB-150 Boiler. Following multiple test batches, the boiler underwent rigorous safety and efficiency testing in May 2019. Specifically designed for Gravity-Flow or Pump hot water systems, this boiler prioritizes ease of installation. With heat exchange tubes and stainless steel baffles, the GB-150 achieves optimal efficiency for a non-condensing gas unit. The GB-150 can be installed in homes, shops, and greenhouses.

## FEATURES

- Burns Liquid Propane or Natural Gas
- Robertshaw Valve / Standing Pilot
- Stainless Steel Burner Tubes
- 304 Stainless Steel Baffle w/ Heat Exchanger Tubes
- Over 5,000 sq. in. of Heat Exchange
- Non-Electric
- Gravity-Flow or Pump Systems
- Easy Access To Controls
- Insulated Metal Jacket
- Manufactured In Lancaster County, PA



## SPECIFICATIONS

<b>Model Number</b>	<b>GB-150</b>
Fuel	LP or NG
Heating Area (Recommended)	1,500 - 5,000 sq. ft.
BTU (Approx)	150,000
Efficiency	83.8%
Top Exhaust	6"
Water Capacity	30 Gallons
Inlet / Outlet	2.00"
Gas Valve Hookup	1/2" NPT
Valve	Millivolt
Overall Size (WxDxH)	27" x 33" x 31.25"
Weight	750 lbs.
U.L. Tested*	Yes
Insulated Jacket	Standard
Warranty	5 Year Limited 1 Year Valves 1 Year Burner 1 Year Controls

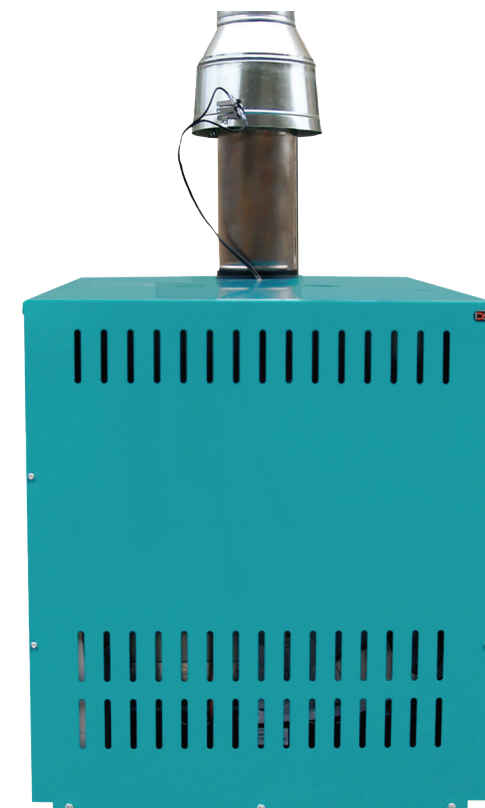
## CLEARANCE FROM COMBUSTIBLES

Front	18"
Back	16"
Right Side	4"
Left Side	6"
Ceiling	24"
Single Wall Stovepipe	6"
Draft Hood	6"
Hot Water Pipes	1/2"

All units require a Class "B" gas vent.

Installation must conform to state and local codes.

\* Safety Tested to Ansi Z21.13-2017, CSA 4.9-2017, CSA B51 Standards



Interior View